



MONTHLY MEMBERSHIP PROGRESS REPORT

District 11 D2

Results as of: 05/31/2019

GMT: STEVE ANTON

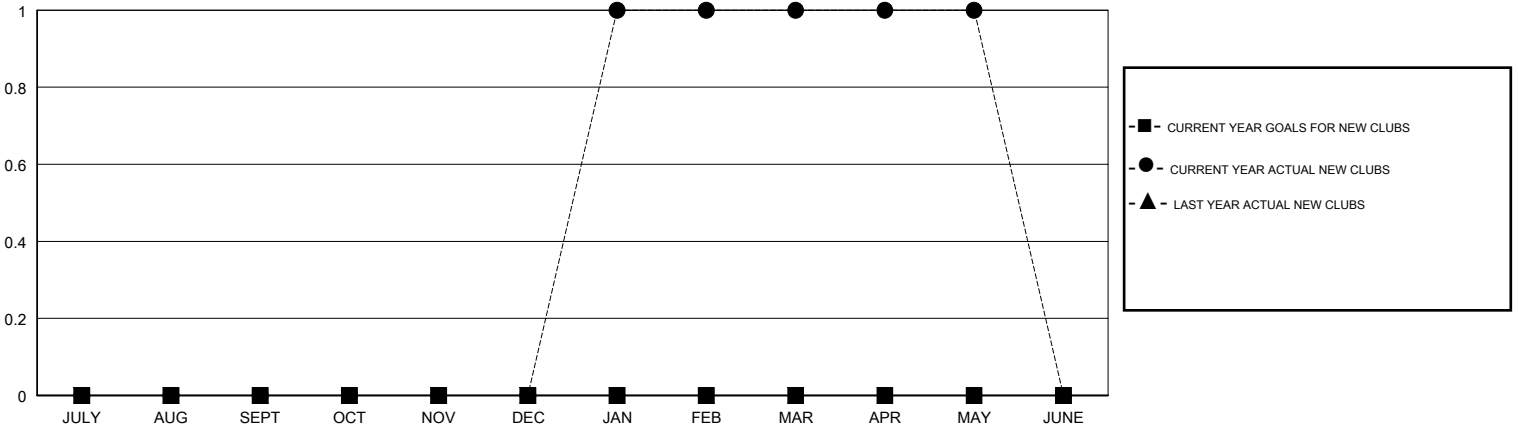
LOCATION MICHIGAN

GMT CA

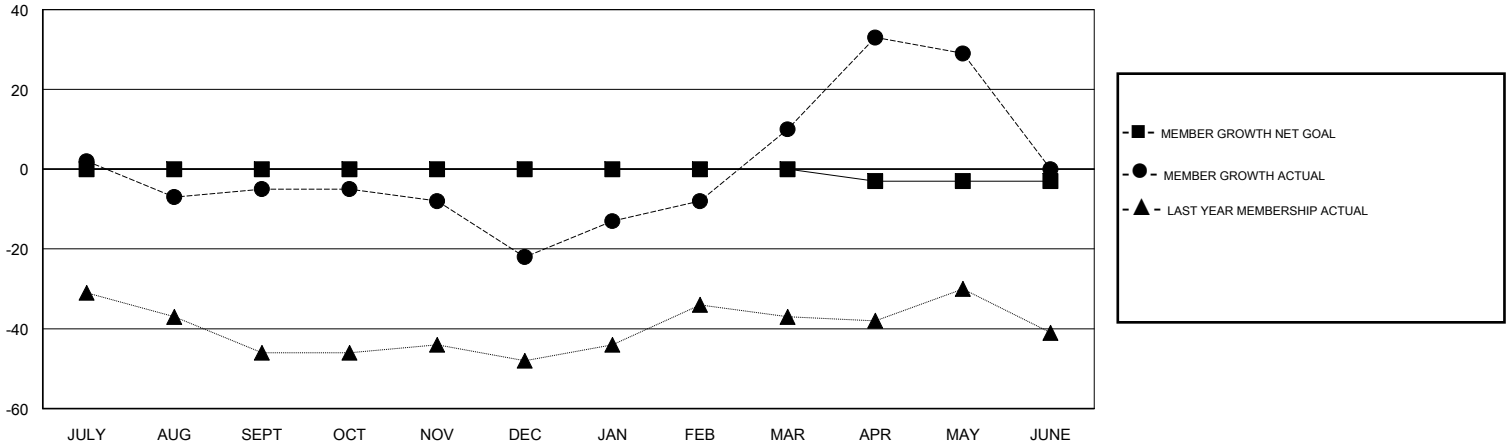
Clubs			
RESULTS FOR 2018-2019			
QUARTER	NEW CLUB GOAL	NEW CLUBS	DROPPED CLUBS
JULY/AUG/SEPT	0	0	0
OCT/NOV/DEC	0	0	0
JAN/FEB/MAR	0	1	0
APR/MAY/JUNE	0	0	0

Members			
RESULTS FOR 2018-2019			
QUARTER	MEMBER GROWTH NET GOAL	MEMBER GROWTH ACTUAL	DROPPED MEMBERS ACTUAL (including transfers)
JULY/AUG/SEPT	0	14	18
OCT/NOV/DEC	0	27	42
JAN/FEB/MAR	0	52	19
APR/MAY/JUNE	-3	41	20

GOALS AND ACTUAL NEW CLUBS CUMULATIVE



GOALS AND ACTUAL MEMBERS CUMULATIVE



DROPPED CLUBS: 0	29 CLUBS OF 45 ADDED 1 OR MORE NEW MEMBERS	<u>GENDER DISTRIBUTION</u> MALE 969 (74.88%) FEMALE 325 (25.12%) Women Percentage Fiscal Year Goal: 23%
<u>DROPPED MEMBERS</u> DECEASED 20 CLUB CANCELLED 0 OTHER 79 TOTAL 99	CLICK HERE FOR CUMULATIVE MEMBERSHIP DATA	TOTAL FAMILY UNIT MEMBERS 212 FAMILY MEMBERS PAYING HALF DUES 108